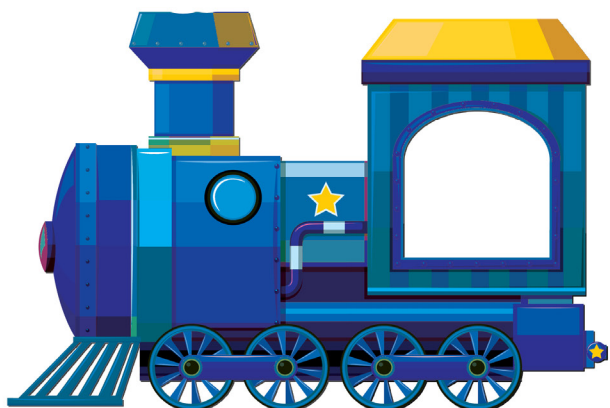


# THE *little* Engine THAT COULD



**OCT 13 - NOV 4, 2018**

**S O C I A L   S T O R Y**

For more information about our sensory friendly performances or accessible programming, please contact Accessibility Coordinator Fran Sillau at [frans@rosetheater.org](mailto:frans@rosetheater.org)

Show Sponsored By:



I am seeing ***The Little Engine That Could*** at The Rose Theater!



I will go to the Rose Theater.  
The outside of The Rose Theater looks like this.

I will walk inside the lobby.



The lobby is a big room where people wait outside the theater. I may need to wait here for a while before I go upstairs to see the show.



My grown-up will talk to the Box Office staff to get our tickets.  
We may have to wait in a line.



I will wait quietly and patiently.

Once we get our tickets, my family and I will have **two choices.**



**The first choice is:**

We can go up the stairs to go to the Hitchcock Theater on the 4th floor. If I walk up the stairs, I will be walking through a pretend “forest.”

There are a lot of steps up to the theater, but I can take breaks and rest along the way if I need to.



### The second choice is:

I can take the elevator up to the 4th floor to the Hitchcock Theater.



Inside the elevator are lots of buttons.  
We will push the button marked "4" to go to the 4th floor.

When we get to the top of the stairs, I will walk into a pretend train station.







In the train station, I will meet a person called “The Conductor.”

I can use my imagination to pretend that I am going on a trip. The “conductor” will help me get ready for my trip.



I can choose objects to take on my “trip”. I can even put the objects into a suitcase.



When I enter the theater it will look like a “train” station. I will see a floor with different colors separated by train tracks. An adult will help me find a place to sit. I may sit on the floor or a soft seat.



I will sit in my seat on my back  
pockets and keep my hands and feet to myself.



If I need to go to the bathroom before,  
after, or during the show,  
I will walk back into the lobby  
with my grown-up.



I will walk downstairs.  
**The bathrooms are on the 2nd floor.**  
This floor is also called **the mezzanine.**

I can also get **a drink** at the drinking fountain near the bathrooms!



When I am done with the bathroom and getting a drink, I will go back to my seat in the theater.

There will be lights in the theater. These lights will have different colors. When the lights go down in the theater and the music starts I know that I can enjoy the show.

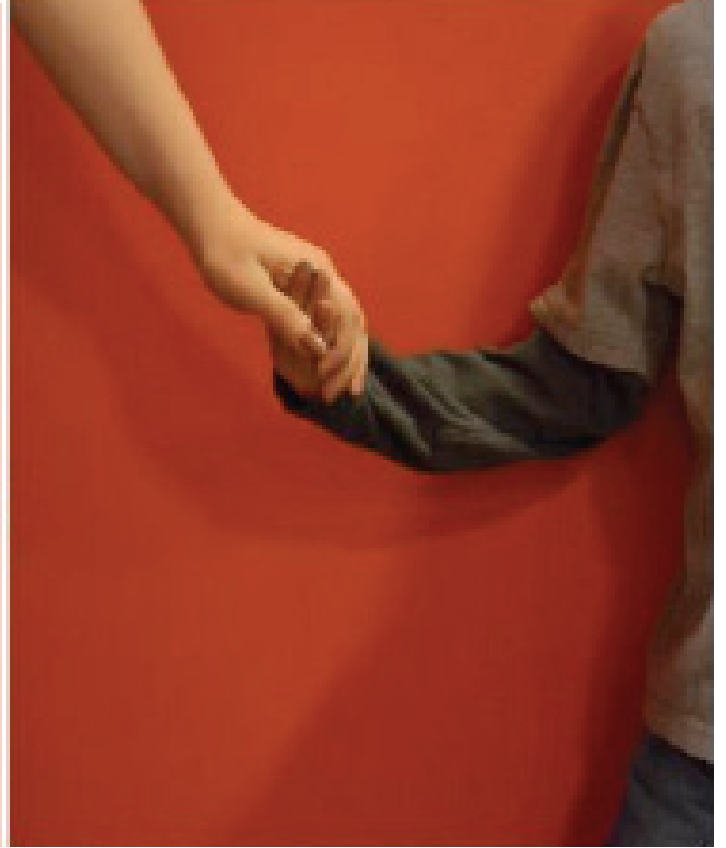


I will be a **good audience member.**  
I will be quiet and watch the stage.



During the play, the actors may ask me to “help” and make noises of trains. I might be asked to say “Puff Puff” or “Toot Toot”. I will listen to the actors and they will help me.





The sounds that help tell the story  
will sometimes be loud.

I know that even though the sounds  
can be loud and can feel scary.

**None of the noise can hurt me.**

The actors will need my help to move the trains. I may be asked to play “follow the leader” and walk on the train tracks. I can do this if I want to. I should listen to the actors. They will help me know what to do.





When the little train get over the mountain at the end of the play. The lights will change. If I look up, I will see bubbles falling from the sky. These bubbles will not hurt me. Bubble are just nice to look at.



After the show is over, the actors will take a bow.

It is nice to clap for the actors.

When we clap, the actors know that  
we had fun watching them act!



If it is too loud, I will cover my ears or  
hold my grown-up's hand.

When the play is over I can leave the theater and  
travel downstairs when my adult says it is ok to leave.  
I can talk to my family or friends about  
the fun things that I saw  
in the show at The Rose!





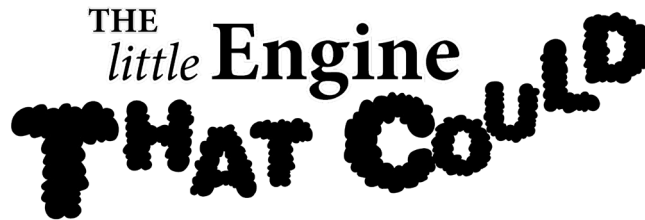


My friends at The Rose Theater hope  
I have a great time at the show,  
and are looking forward to  
seeing me soon!



# Information for Parents

## Sensory Guidance:



At The Rose Theater, we believe everyone deserves a chance to experience the magic of the theater. Performances and classes are open to children and family members of all abilities. We are committed to removing obstacles and opening up new opportunities for people with disabilities.

The Rose Theater understands that younger children and kids on the autism spectrum have unique and varying needs. This guide attempts to help parents prepare their children for a visit to The Rose.

**What to expect at a FIRST STAGE show:** The Rose is proud to offer young theater-goers a unique opportunity to experience the theater arts. Our FIRST STAGE productions are perfect for preschoolers, children with special needs or sensory needs, or others who desire a gentler, more interactive and personal performance.

FIRST STAGE productions feature:

- Interactions with performers
- A smaller theater space where kids are part of the action
- Flexible seating in chairs, on the floor, on benches, etc.
- A “shush-free” environment
- Minimal periods of darkness or loud sounds
- A whole lot of imagination and fun!

The Rose’s Hitchcock Stage (a smaller theater space located on our 4th floor) allows children to become completely absorbed in the theatrical experience. We encourage their interaction with the performers and invite your family to tear down the fourth wall and become a part of the performance.

An elevator is available to those who require it to access the 4th floor. Please see the Box Office for assistance.

FIRST STAGE provides a way to nurture creative thinking and imagination while inspiring children. It is truly a small stage for big imaginations.



## Expect

Screen-centered Watty and stuff-collecting Piper are sisters who aren't exactly on the same track. But when the train to Springfield is delayed leaving them stranded in the station, the sometimes squabbling siblings must learn to work together—with lots of help from children in the station to find a way to get toys and treats to the children on the other side of the mountain. With its universal themes of finding your own confidence and believing in yourself as well as helping others, you and your little ones will relish this ride on the rails of doing the right thing!

The production features interactive and multi-sensory storytelling in theater. It encourages children to look at the world through the creative lens, to figure out how to work together, and to be confident in themselves. The show introduces the concept of teamwork, confidence, and doing the right thing. The overall message of the story is accepting others' differences and working together to achieve a goal.

FIRST STAGE productions encourage interactivity with the audience. Children are welcome to speak out loud to the actors when asked questions. They may be invited to come into the acting space to "help" with part of the action. They may be given an object to hold to help tell the story, or participate in other similar ways. Children are welcome to engage in these activities to whatever extent they are comfortable.

## Positive Themes

- Problem-solving
- Being different and working together
- Doing the right thing
- Being confident in yourself

## Preparing for The Rose Experience

### *Getting Ready:*

- Coming to The Rose can be a special occasion, or a casual family outing, but it's always fun. Some audience members dress up, some do not--it's your choice.
- Food and drink are not allowed in the theater.
- Children can bring comfort toys as needed, as long as their toys sit quietly during the show.
- For FIRST STAGE productions only, you are welcome to bring a camera and take photos, but please do not use a flash. Electronic devices such as phones and tablets must be turned off in the theater.
- Seating at The Rose is general admission for FIRST STAGE shows. This means that seats are not assigned, but are available on a first-come, first-served basis. FIRST STAGE productions often feature unconventional seating, as well as traditional theater seating. This may include sitting on the floor, in beanbags, rocking chairs, folding chairs, benches, and more. Wheelchair seating is available. If you require a specific space due to your family's needs, please contact The Rose Box Office for accommodations.
- Always feel free to call The Rose Box Office at (402) 345-4849 or contact [info@rosetheater.org](mailto:info@rosetheater.org) if you have any questions.

#### *Parking:*

- Several parking spaces are available for patrons with disabilities directly outside The Rose Theater.

#### *Restrooms:*

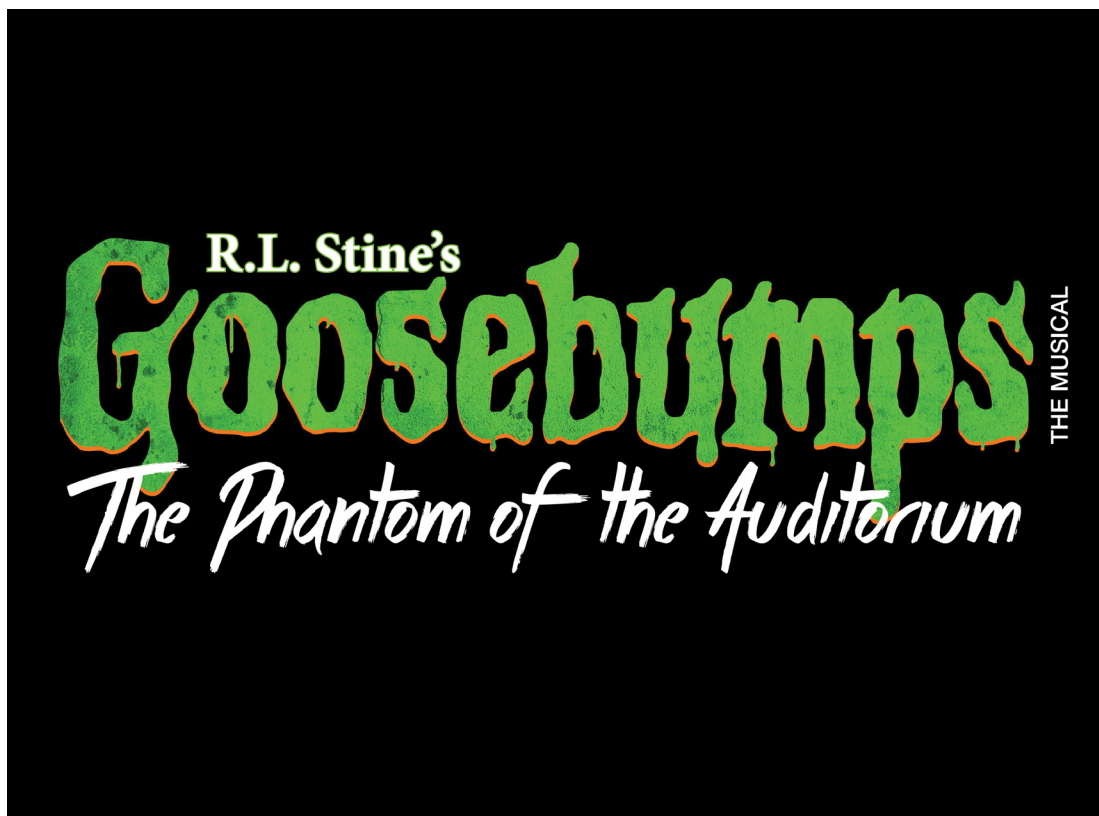
- Wheelchair accessible restrooms are located in the lower lobby and on the mezzanine. Individual, single-user restrooms are available on the mezzanine. An elevator is available for those needing access to the Hitchcock Theater on the 4th floor, the lower lobby and mezzanine levels.

#### *After the Show:*

- The cast always takes a bow. Prepare for applause!
- When it is time to leave the theater, the crowd can move slowly and there may be lines. If you need to wait for the crowd to thin, you can wait in your seats for a few minutes.
- Check out The Rose's website and social media to learn more about our upcoming productions, classes, camps, and other programs and give us your feedback after the show.

**Come see our next show!**

October 26 - November 11







**Performing Arts**  
FOR CHILDREN AND FAMILIES

**[www.rosetheater.org](http://www.rosetheater.org)**